

vario

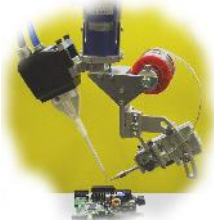
inline soldering system



LightBeam



Hot-Iron



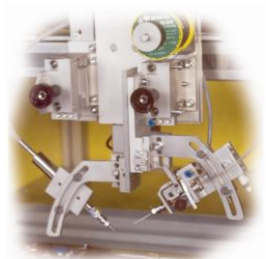
Induction



Dispenser



Laser



Flame

- *3-axes robot with PC-control*
- *extendable up to 6 axes*
- *modular conception with flexible working ranges*
- *programming system WinControl*
- *soldering system LightBeam or others*

vario: high flexibility by modular concept

The basic module is part of a modular and standardized system for selective soldering.

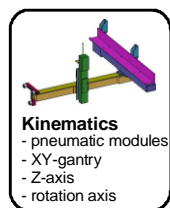
The vario system allows to integrated multiple working processes into one machine. Depending on the customer-specific application, different axis systems and soldering tools such as LightBeam, laser, hot-iron, induction, flame or mini wave can be integrated. Thus the system can be configured precisely to the requirements.

Several automatic stations can be integrated in one module. All the integrated stations are controlled by only one PC-system (MS Windows). Only one electrical cabinet and one power supply (electricity and air) are necessary for the complete machine with several stations. Thus the vario system has a clear structure and the costs of the complete system will be reduced.

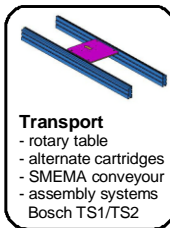
The control is based on industrial PC. But each working process is controlled by an autonomous micro controller.

The local control concept saves capacity of the PC and guarantees the real time requirements of the processes.

The PC-control allows the simple and comfortable handling of process parameters and programs. The machine is equipped with a modem ISDN plugin-card for remote maintenance, in order to ensure fast support in case of failure.



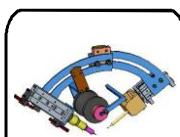
- Kinematics**
- pneumatic modules
 - XY-gantry
 - Z-axis
 - rotation axis



- Transport**
- rotary table
 - alternate cartridges
 - SMEMA conveyour
 - assembly systems
 - Bosch TS1/TS2



- width**
- 1.000 - 2.400 mm
 - 1 / 2 / 3 / 4 stations



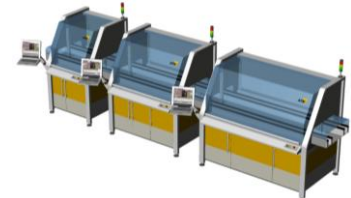
Processes

- Soldering**
- LightBeam
 - LightBeam w. wire
 - Laser
 - Laser with wire
 - Hot-Iron with wire
 - Induction
 - Induction with wire
 - Flame with wire

- Others**
- Dispensing
 - Fluxing
 - Preheating
 - Assembly
 - Testing

Variable width for up to 4 stations

Due to the optimized profile design the basic module can be scaled to any size in width. With a maximum width of 2,400 mm, up to four working processes (stations) can be integrated into one module.

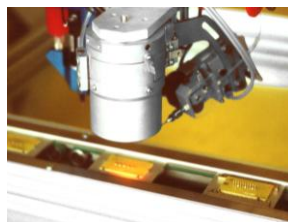


different standard width modules

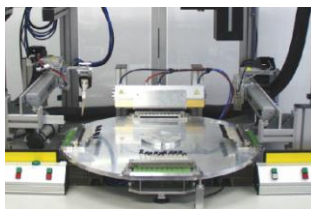
modular design for maximal 4 stations and different tools and axis systems

Variable material supply

The modular design allows different types of work piece loading like standard SMEMA or work piece carrier systems. For off-line operation also changing cartridge system or rotary index table are available.



SMEMA conveyour



rotary table



changing cartridges

Your advantages:

- Process and machine from one hand
- Best solution trough choosing the optimal process
- Customized machine made of proved standard components
- High flexibility regarding extensions / adaptation of new products

And thus

- High level of process reliability
- Cost-optimal solution
- Safe investment