

Handling beams and string boxes for manual handling of solar cells and strings



- *safe handling of cells and strings*
- *one- or two-person operation*
- *right- or left-handed operation*

System description

Handling beam



The handling beam allows solar cells or strings to be moved easily and securely, whether for removal from a complete matrix or to manually be placed onto the panel.

Handle bars at the ends and in the center allow for one-person operation as well as operation by two, enabling even more precise placement into a matrix.

Suitable for left- and right-handed operation.

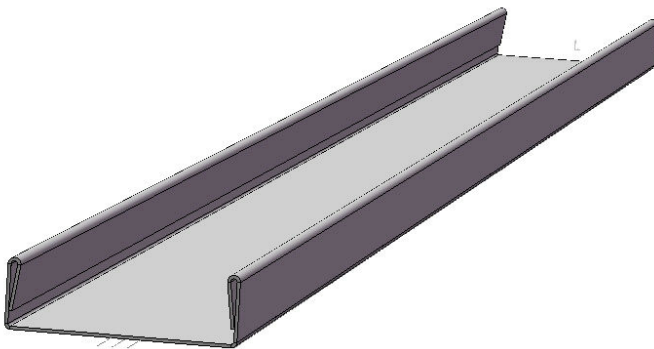
Handling beam variants

SH-HB5-12 for handling beam. String with 12 cells 125x125

SH-HB6-10 for handling beam. String with 10 cells 156x156

SH-HB6-08 for handling beam. String with 8 cells 156x156

String box



ATN's string boxes are used to safely transport several strings between stations, e.g. from stringer to LayUp.

V and U type designs are chosen according to production type.

Index holes guarantee the correct orientation and alignment at the processing stations.

String box variants

SH-SB5-12 for string box. String with 12 cells 125x125

SH-SB6-10 for string box. String with 10 cells 156x156

SH-SB6-08 for string box. String with 8 cells 156x156

